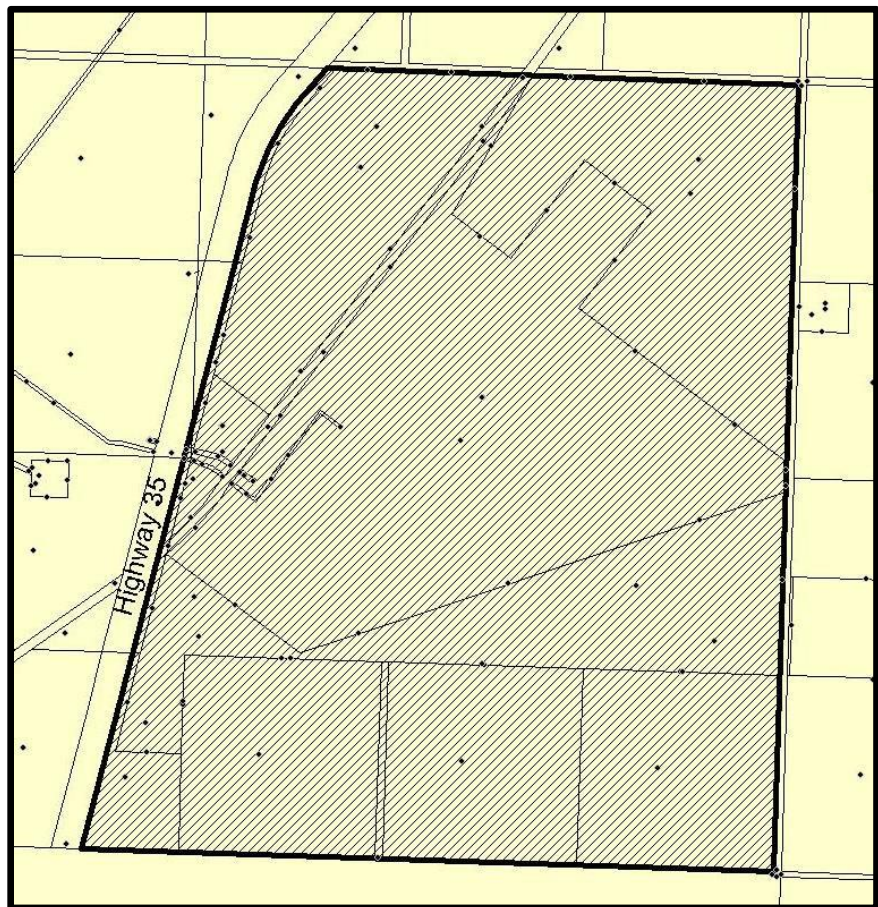
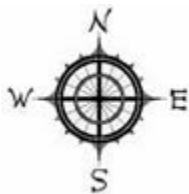


SECTIONS of 1 & 12, PT OF
SECTIONS 2 & 11-109-20-W5M

I.D.P. Area



Location: *High Level Rural*

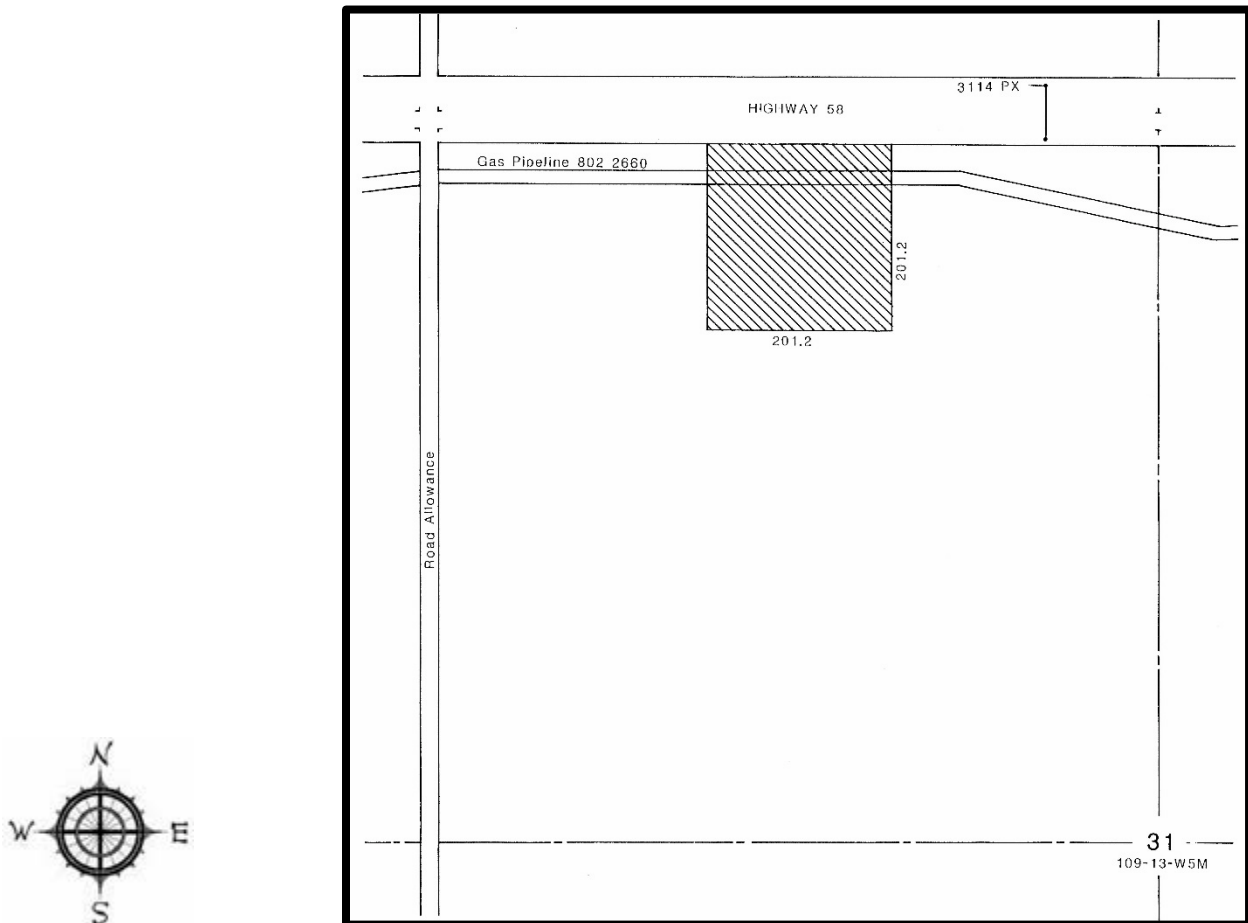
Rezoned from: *Forestry District "F"*

To: *Direct Control District 3 "DC3"*

*("DC3" changed to Direct Control "DC", "DC" changed to Direct Control 1 "DC1" by
Bylaw 1066-17)*

Bylaw 176/99, June 1999

PT of NW 31-109-13-W5M



Location: *Fort Vermilion Rural*

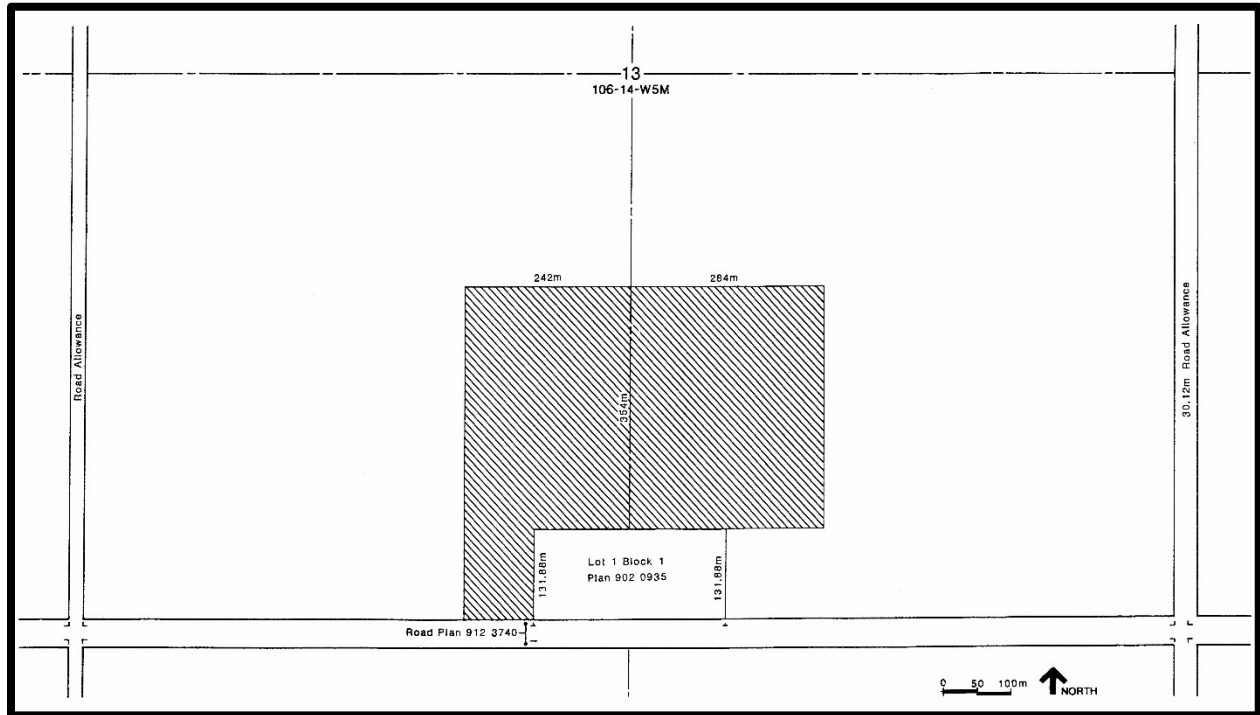
Rezoned from: *Agricultural District "A1"*

To: *Direct Control District "DC2"*

*("DC2" changed to Direct Control "DC", "DC" changed to Direct Control 1 "DC1" by
Bylaw 1066-17)*

Bylaw 375/03, August 2003

PT of SE 13-106-14-W5M



Location: *La Crete Rural*

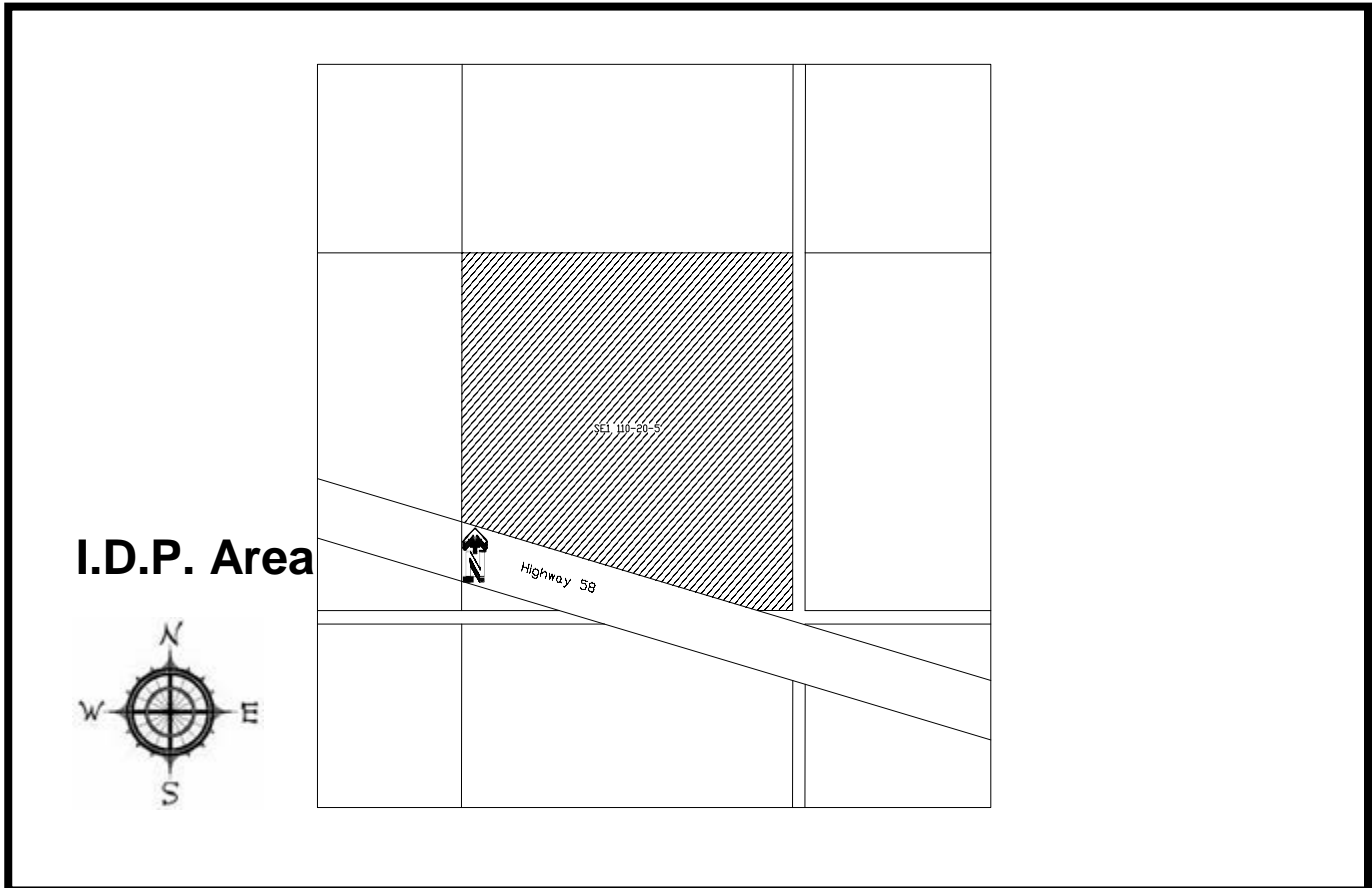
Rezoned from: *Agricultural District 1 "A1"*

To: *Direct Control District 3 "DC3"*

("DC3" changed to Direct Control "DC", "DC" changed to Direct Control 1 "DC1" by Bylaw 1066-17)

Bylaw 388/03, November 2003

PT of SE 1-110-20-W5M



Location: *High Level Rural*

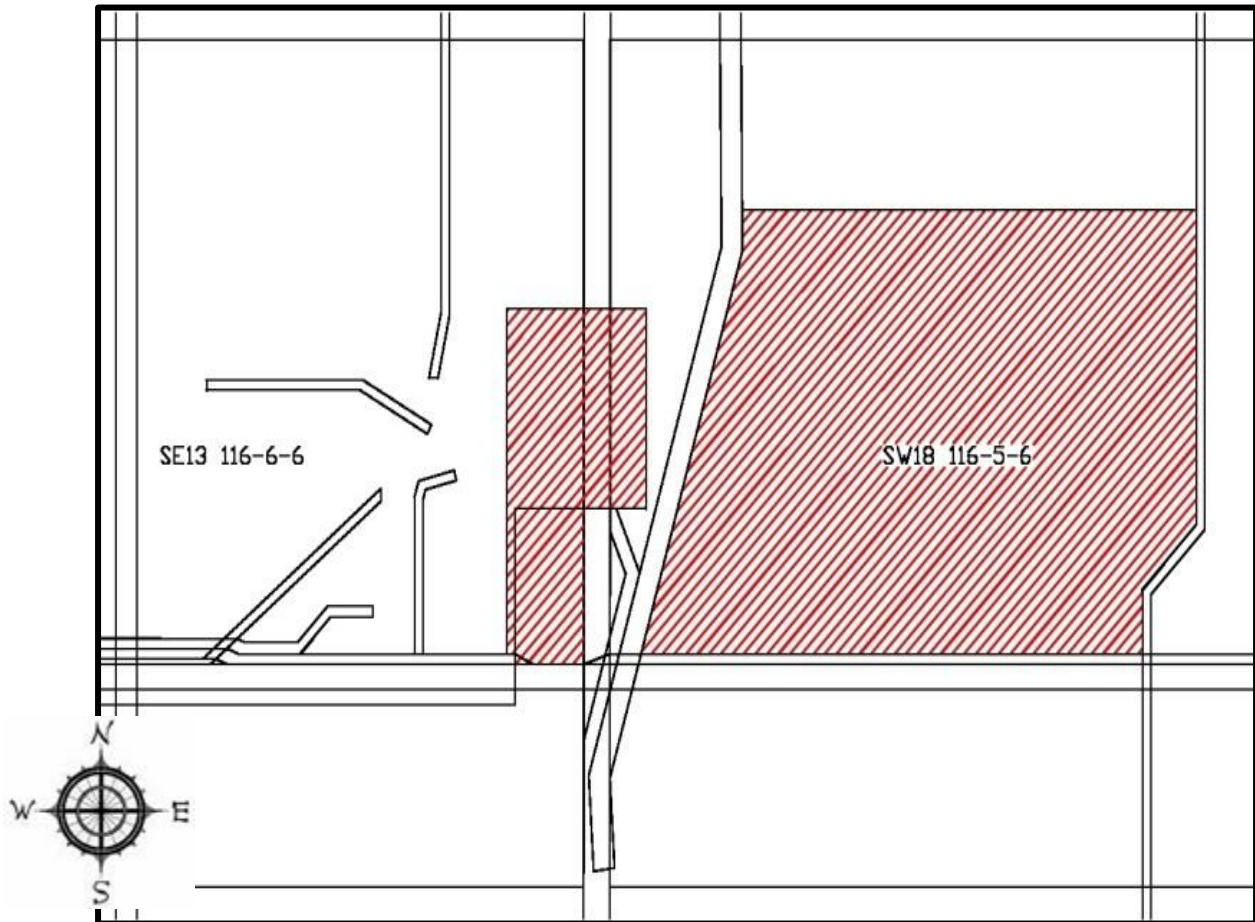
Rezoned from: *Agricultural District 1 "A1"*

To: *Direct Control District 3 "DC3"*

("DC3" changed to Direct Control "DC", "DC" changed to Direct Control 1 "DC1" by Bylaw 1066-17)

Bylaw 515/05, September 2005

PT of SW 18-116-5-W6M and
PT of SE 13-116-6-W6M



Location: *Zama Lake Area*

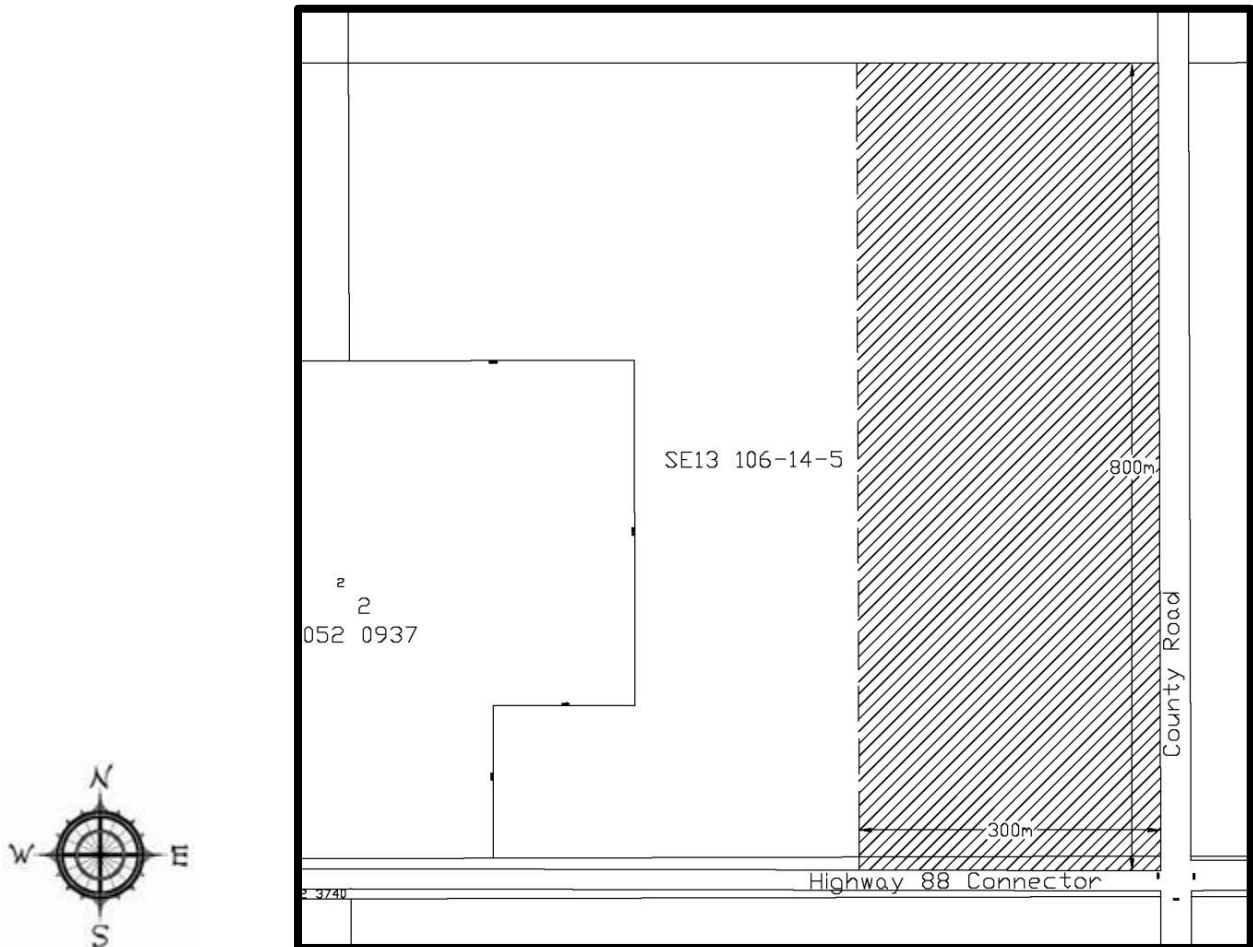
Rezoned from: *Forestry District "F"*

To: *Direct Control District 3 "DC3"*

*("DC3" changed to Direct Control "DC", "DC" changed to Direct Control 1 "DC1" by
Bylaw 1066-17)*

Bylaw 653/07, November 2007

PT of SE 13-106-14-W5M



Location: *La Crete Rural*

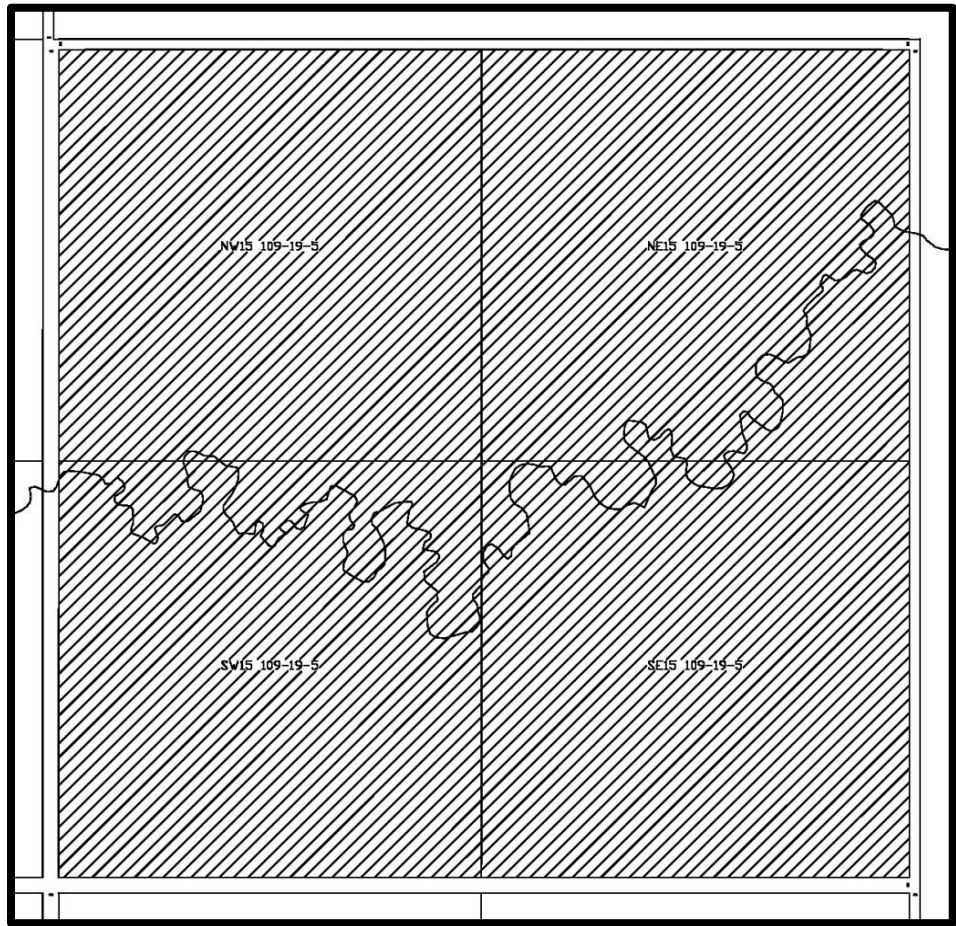
Rezoned from: *Agricultural District 1 "A1"*

To: *Direct Control District 1 "DC1"*

("DC1" changed to Direct Control "DC", "DC" changed to Direct Control 1 "DC1" by Bylaw 1066-17)

Bylaw 665/08, March 2008

SECTION 15-109-19-W5M



I.D.P. Area



Location: *Rural High Level*

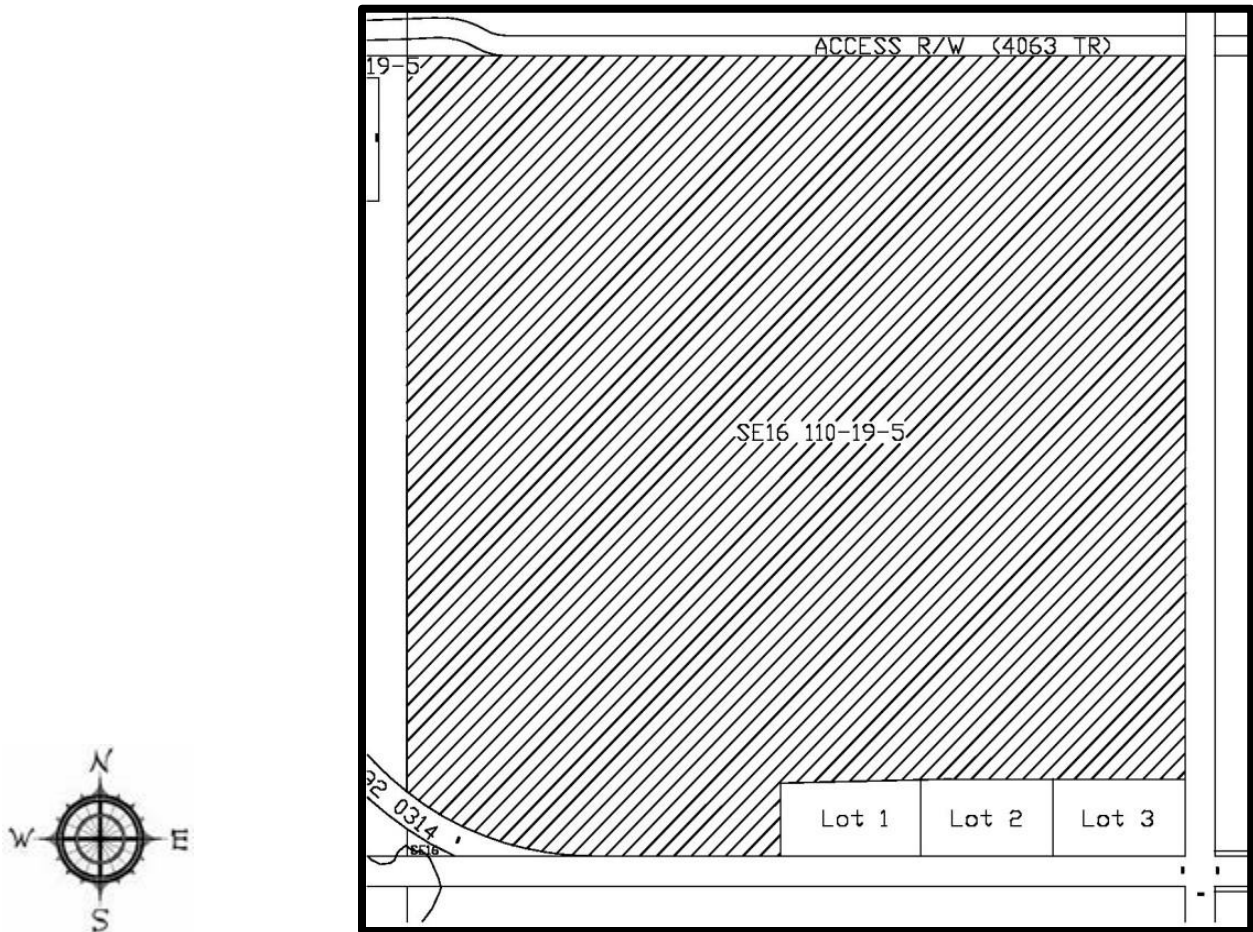
Rezoned from: *Agricultural District 1 "A1"*

To: *Residential Condominium District "RCD"*

("RCD" changed to Direct Control 2 "DC2" by Bylaw 1066-17)

Bylaw 674/08, June 2008

PT of SE 16-110-29-W5M



Location: *High Level Rural*

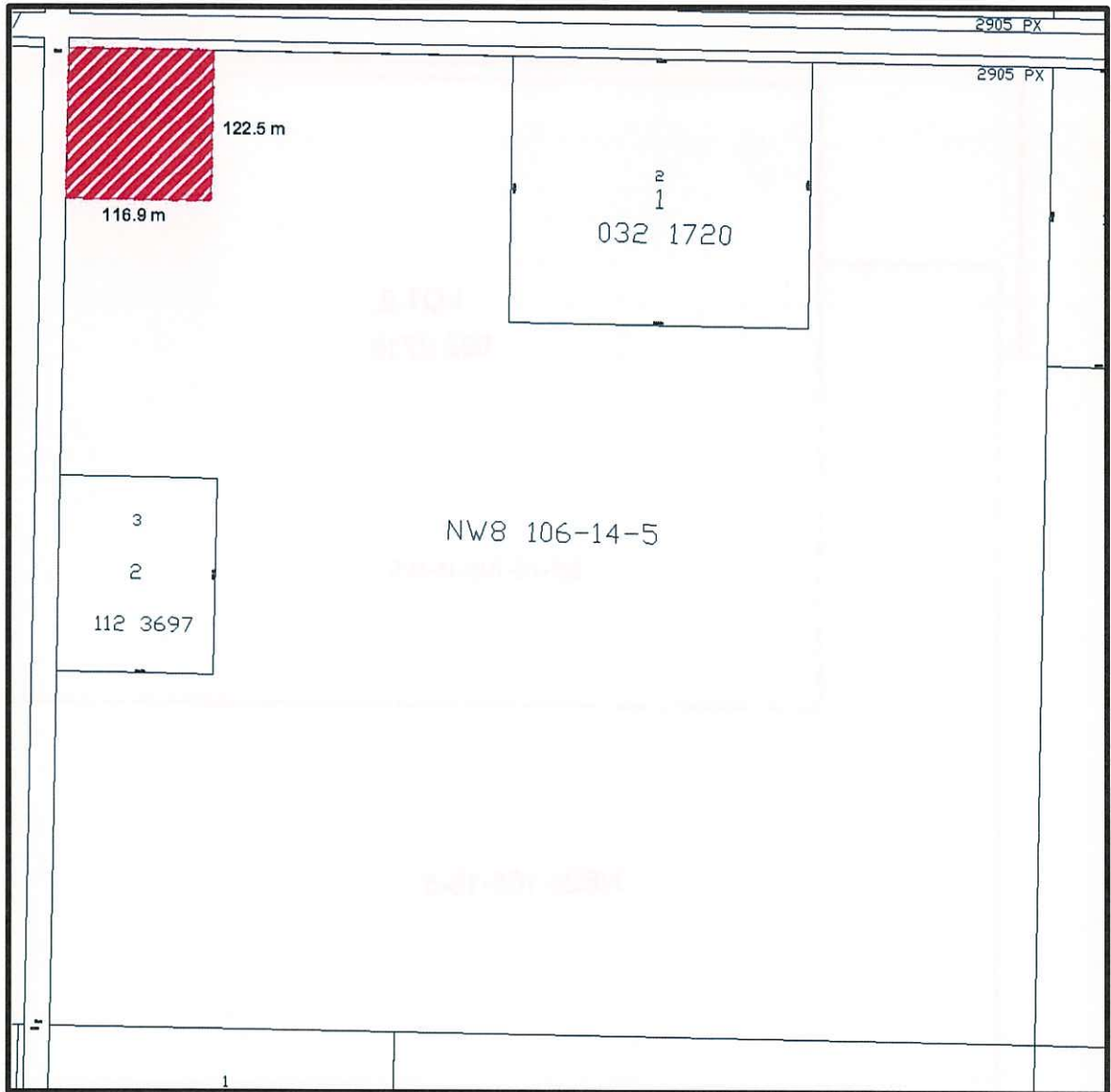
Rezoned from: *Agricultural District 1 "A1"*

To: *Direct Control District 2 "DC2"*

*("DC2" changed to Direct Control "DC", "DC" changed to Direct Control 1 "DC1" by
Bylaw 1066-17)*

Bylaw 719/09, June 2009

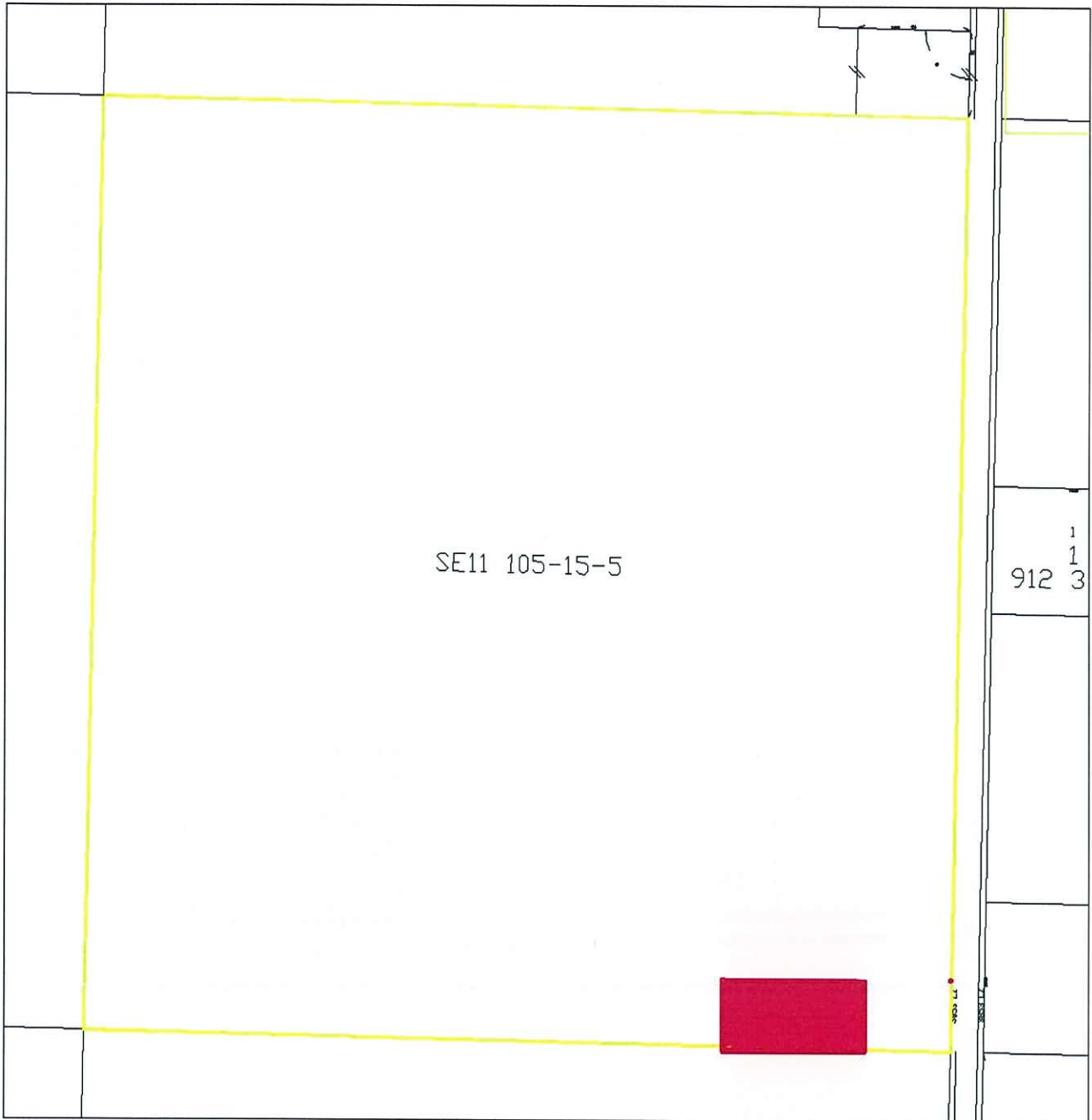
Pt of NW 8-106-14-W5M



Location: *La Crete Rural*
Rezoned from: Agricultural "A"
To: Direct Control 2 "DC2"

Bylaw 1140-19, April 2019

Part of SE 11-105-15-W5M



Location: *La Crete Rural*

Rezoned from: Agricultural "A"

To: Direct Control 2 "DC2"

Bylaw 1185-20, July 2020